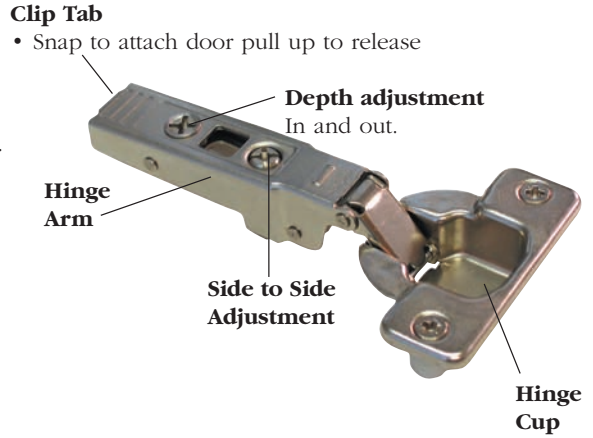


blum Understanding Concealed Hinges & Program

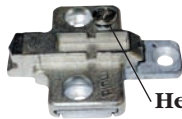
Clip Top hinges for frameless and face frame construction.

Because of appearance, function and 6-way independent adjustability European concealed hinges are now the industry standard for cabinet doors. Blum's Clip Top hinge design also gives the added advantage of easy door attachment and removal.

- With Spiral-Tech **depth adjustment**, just one and three quarter revolutions of the screw creates 5mm of adjustment without loosening and retightening a fixing screw.
- **Side adjustment** is a flush screwhead that allows 4mm of adjustment. It also has an integral stop that prevents removal.
- **Height adjustment** is accomplished on the mounting plate with a range of +/- 2mm removal.
- For door thickness greater than 22mm a trial application is recommended or use the Thick door hinge



Frameless Clip Mounting Plate



Height Adjustment

Face Frame Clip Mounting Plate

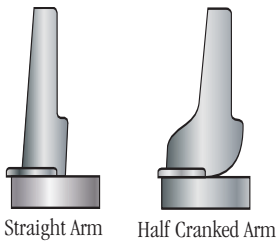


Height Adjustment

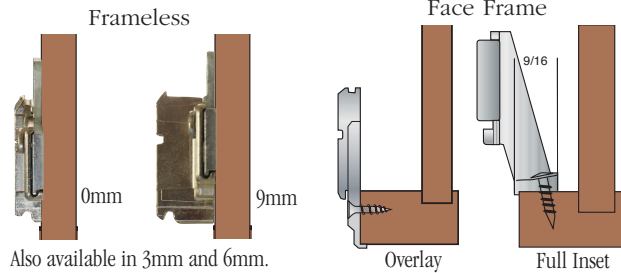
Allows for face frame applications for all clip top hinges.

NOTE: For economical alternative face frame concealed hinge, see compact series hinges on next page.

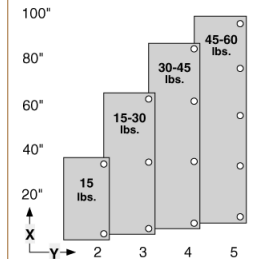
Basic Hinge Options



Basic Mounting Plate Options

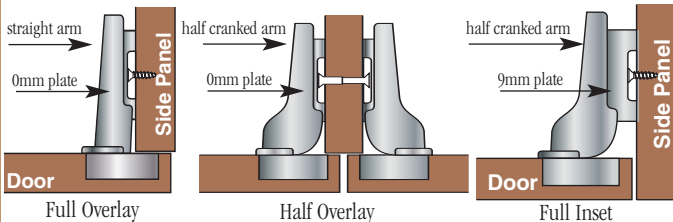


Hinges per Door

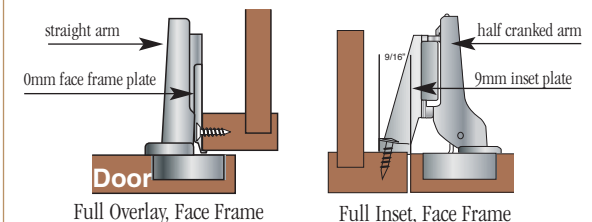


Basic Hinge and Plate Combinations

Frameless Construction

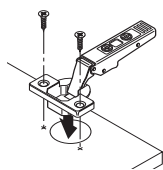


Face Frame Construction



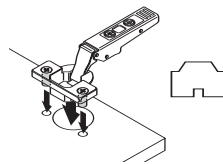
STEP 1: Install door using one of the four hinges, each with their own attachment method.

Screw-on



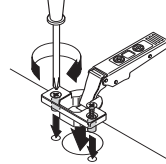
Use #6 wood screws.

Press-in



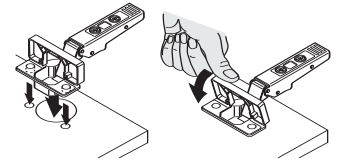
Pre-attached 8mm dowels, installed with Blum MINIPRESS.

EXPANDO



Pre-attached expanding dowels. Pre-bore with MINIPRESS.

INSERTA

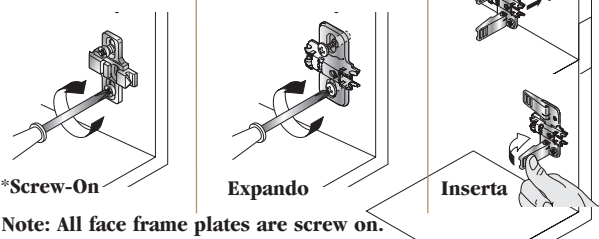


Depressing cover expands cup for tool-free mounting. Pre-bore with MINIPRESS.

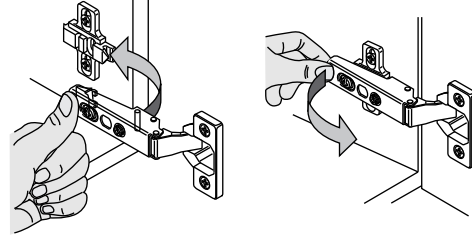
Continued on next page

blum® Concealed Hinges (Cont.)

STEP 2: Install mounting plate using one of three attachment methods.



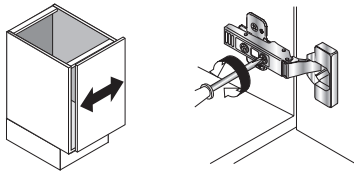
STEP 3: Attach door to cabinet with clip mechanism.



STEP 4: Adjust door for perfect fit.

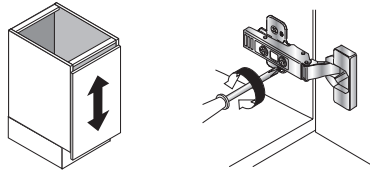
Cam Side adjustment

Turn screw on hinge to increase door overlay (4mm range)



Cam Height adjustment

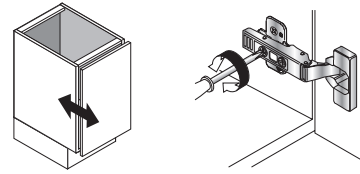
Rotate cam screw on plate to adjust door position (4mm range)*.



*On non-cam mounting plates loosen screw(s), adjust door and retighten screws.

Cam Depth adjustment

Turn back screw on hinge to adjust door position (5mm)*.



*On Clip Top hinges, loosen screw, adjust door and retighten screw.

Compact Series Face Frame Hinges

Compact 33



- 2 piece assembly
- Overlays
 - Edge mount $\frac{1}{4}$ " to $1\frac{5}{8}$ "
 - Face mount $1\frac{3}{8}$ " +

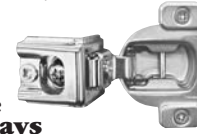
Compact 38N

Small Overlays



- 1 piece assembly
- Overlays from $\frac{3}{8}$ " to $\frac{3}{4}$ "

Compact 39C

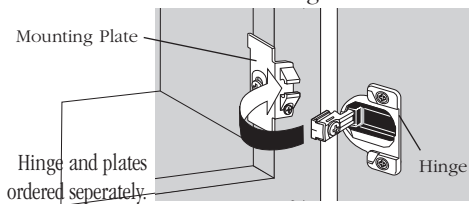


Large Overlays

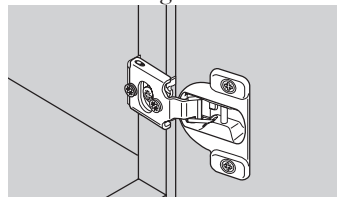
- 1 piece assembly
- Overlays from 1" to $1\frac{9}{16}$ "

STEP 1: Mount Hinge

COMPACT 33 -
Two Piece Hinges

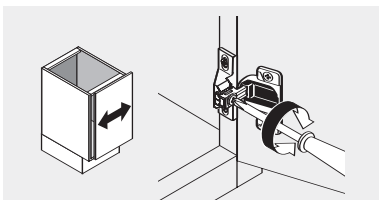


COMPACT 38N/39C -
One Piece Hinges

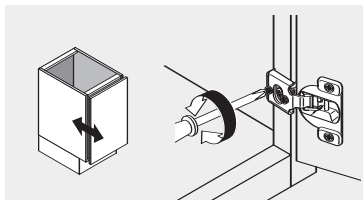


STEP 2: Adjust door for perfect fit.

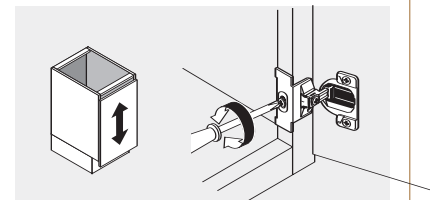
Side adjustment possible on all COMPACT hinges except 38. series. COMPACT 38N/39C have cam side adjustment.



COMPACT 38N and 39C have **cam depth adjustment**.



All COMPACT hinges are independently **height adjustable** on mounting plates.



Basic Hinges and Their Applications

The Blum Concealed Hinge program is an extensive line of hinges for almost any cabinet door application. The hinges are made up of two parts, the hinge arm and the plate. Below you will see hinge arm and plate combinations for the most common applications in the three most popular opening angles. Other non-standard applications such as blind corner, thick door and bi-fold door are also available.

| Hinge Arm Styles | Mounting | Opening Angles | Standard Boring Pattern |
|---|------------------------------------|---|--|
| <p>Straight Arm</p> <p>Half Cranked Arm</p> | <p>Screw On</p> | <p>170°</p> <p>120°</p> <p>107°</p> <p>Degree Opening</p> | <p>Hinge cup = 35mm</p> <p>Depth = 12mm (1/2")</p> <p>Bore distance B = 51mm (3/16")</p> <p>Center point C = 22.5mm (7/8")</p> <p>(Applies to 5/8" & 3/4" thick doors)</p> |
| Frameless Cabinet Mounting Plates | Face Frame Cabinet Mounting Plates | | |
| <p>0mm</p> <p>9mm</p> | <p>3mm</p> <p>Inset</p> | | |

Frameless Cabinet Construction

| 5/8" (16mm) Overlay | 1/4" (6.5mm) Twin Overlay Doors | Inset |
|---|---|---|
| <p>straight arm</p> <p>0mm plate</p> | <p>half cranked arm</p> <p>0mm plate</p> | <p>half cranked arm</p> <p>9mm plate</p> <p>Side Panel</p> <p>Door</p> |
| <p>107° Hinge B075T1550 Plate B175H710</p> <p>120° Hinge B071T5550 Plate B175H710</p> <p>170° Hinge B071T6550 Plate B175H710</p> | <p>107° Hinge B075T1650 * Plate B175H910</p> <p>120° Hinge B071T5650 * Plate B175H910</p> <p>170° Hinge B071T6650 * Plate B175H910</p> <p>*Twin application screw required</p> | <p>107° Hinge B075T1650 Plate B175H719</p> <p>120° Hinge B071T5650 Plate B175H719</p> <p>170° Hinge B071T6650 Plate B175H719</p> |

Face Frame Cabinet Construction

| 1/2" (13mm) Overlay | Inset |
|---|---|
| <p>straight arm</p> <p>3mm face frame plate</p> <p>Door</p> | <p>half cranked arm</p> <p>9mm inset plate</p> |
| <p>107° Hinge B075T1550 Plate B175L6030.21</p> <p>120° Hinge B071T5550 Plate B175L6030.21</p> <p>170° Hinge B071T6550 Plate B175L6030.21</p> | <p>107° Hinge B075T1650 Plate B175H5030.21</p> <p>120° Hinge B071T5650 Plate B175H5030.21</p> <p>170° Hinge B071T6650 Plate B175H5030.21</p> |

If you need help, feel free to call our hinge experts at 1-800-383-0130

OBSERVATION NOTE:

Moving from a straight arm hinge to a half cranked hinge or increasing the mounting plate height causes the door to move towards the inside of the cabinet reducing the overlay.